



FCC TEST REPORT

Prepared for :

EDA Technology Shanghai Co.,Ltd
Building 29, No.1661 Jialuo Road, Jiading District, Shanghai, PRC

Product Name: CM4 AI CAMERA

Trade Mark: 

Product Model (S): ED-AIC2000, ED-AIC2000-120, ED-AIC2000-023,
ED-AIC2000-020, ED-AIC2000-016

Date of Test: Jan. 03, 2025 – Jan. 20, 2025

Date of Report: Jan. 20, 2025

Report Number: HK2501030044-1ER

Prepared By :

Shenzhen HUAKE Testing Technology Co., Ltd.
1-2/F., Building B2, Junfeng Zhongcheng Zhizao Innovation Park, Heping,
Fuhai Street, Bao'an District, Shenzhen, Guangdong, China
TEL: +86-755-2302 9901 FAX: +86-755-2302 9901
E-mail: service@cer-mark.com <http://www.cer-mark.com>



TEST REPORT VERIFICATION

Applicant : EDA Technology Shanghai Co.,Ltd
Address : Building 29, No.1661 Jialuo Road, Jiading District, Shanghai, PRC
Manufacturer : EDA Technology Shanghai Co.,Ltd
Address : Building 29, No.1661 Jialuo Road, Jiading District, Shanghai, PRC
Product Name : CM4 AI CAMERA
(A) Product Model : ED-AIC2000
(B) Series Model : ED-AIC2000-120, ED-AIC2000-023, ED-AIC2000-020, ED-AIC2000-016
(C) Power Supply : DC24V From Adapter with AC100-240V, 50/60Hz

Standards FCC Part 15 Subpart B
ANSI C63.4:2019

This device described above has been tested by HUAKE, and the test results show that the equipment under test (EUT) is in compliance with Part 15 of FCC Rules. And it is applicable only to the tested sample identified in the report.

This report shall not be reproduced except in full, without the written approval of HUAKE, this document may be altered or revised by HUAKE, personal only, and shall be noted in the revision of the document.

Test Result **Pass**

Date of Test: Jan. 03, 2025 – Jan. 20, 2025

Prepared by: Kevin Pan
Project Engineer

Reviewed by: Sliver Wom
Project Supervisor

Approved by: Jason Zhou
Technical Director



1 . TEST SUMMARY	5
1.1 TEST FACILITY	6
1.2 MEASUREMENT UNCERTAINTY	6
2 . GENERAL INFORMATION	7
2.1 GENERAL DESCRIPTION OF EUT	7
2.2 DESCRIPTION OF TEST MODES	8
2.3 DESCRIPTION OF TEST SETUP	9
2.4 DESCRIPTION TEST PERIPHERAL AND EUT PERIPHERAL	10
2.5 MEASUREMENT INSTRUMENTS LIST	11
3 . EMC EMISSION TEST	12
3.1 CONDUCTED EMISSION MEASUREMENT	12
3.1.1 POWER LINE CONDUCTED EMISSION	12
3.1.2 TEST PROCEDURE	13
3.1.3 TEST SETUP	13
3.1.4 EUT OPERATING CONDITIONS	13
3.1.5 TEST RESULTS	14
3.2 RADIATED EMISSION MEASUREMENT	16
3.2.1 LIMITS OF RADIATED EMISSION MEASUREMENT	16
3.2.2 TEST PROCEDURE	16
3.2.3 TEST SETUP	17
3.2.4 EUT OPERATING CONDITIONS	17
3.2.5 TEST RESULTS	18
3.2.6 TEST RESULTS(Above 1GHz)	20
4 . EUT TEST PHOTO	22
ATTACHMENT PHOTOGRAPHS OF EUT	23



**** Modified History ****

Revision	Description	Issued Data	Remark
Revision 1.0	Initial Test Report Release	2025/01/20	Jason Zhou
Revision 2.0	All test data were obtained from: HK2501030042-1ER Original Factory Information (JABIL SDN BHD)	2025/01/20	Jason Zhou



1. TEST SUMMARY

Test procedures according to the technical standards:

EMC Emission				
Standard	Test Item	Limit	Judgment	Remark
FCC Part 15 Subpart B ANSI C63.4:2019	Conducted Emission	Class B	PASS	
	Radiated Emission	Class B	PASS	

NOTE:

- (1) 'N/A' denotes test is not applicable in this Test Report
- (2) For client's request and manual description, the test will not be executed.



1.1 TEST FACILITY

Shenzhen HUAKE Testing Technology Co., Ltd.

Add. : 1-2/F., Building B2, Junfeng Zhongcheng Zhizao Innovation Park, Heping, Fuhai Street, Bao'an District, Shenzhen, Guangdong, China

Testing Laboratory Authorization:

A2LA Accreditation Code is 4781.01.

FCC Designation Number is CN1229.

Canada IC CAB identifier is CN0045.

CNAS Registration Number is L9589.

1.2 MEASUREMENT UNCERTAINTY

The reported uncertainty of measurement $y \pm U$, where expanded uncertainty U is based on a standard uncertainty multiplied by a coverage factor of $k=2$, providing a level of confidence of approximately **95 %**.

A. Conducted Measurement :

Measurement Frequency Range	Uncertainty	NOTE
150 KHz ~ 30MHz	$\pm 2.71\text{dB}$	

B. Radiated Measurement :

Measurement Frequency Range	Uncertainty	NOTE
30MHz ~ 1000MHz	$\pm 3.90\text{dB}$	
1GHz ~6GHz	$\pm 4.28\text{dB}$	



2. GENERAL INFORMATION

2.1 GENERAL DESCRIPTION OF EUT

Product Name	CM4 AI CAMERA		
Product Model	ED-AIC2000		
Series Model	ED-AIC2000-120, ED-AIC2000-023, ED-AIC2000-020, ED-AIC2000-016		
Model Difference	All model's the function, software and electric circuit are the same, only with a product color and model named different. Test sample model: ED-AIC2000.		
Product Description	The EUT is a CM4 AI CAMERA.		
	Operating frequency:		N/A
	Connecting I/O port:		N/A
	Based on the application, features, or specification exhibited in User's Manual, the EUT is considered as an ITE/Computing Device. More details of EUT technical specification, please refer to the User's Manual.		
Power Source	DC Voltage		
Power Rating	DC24V From Adapter with AC100-240V, 50/60Hz		



2.2 DESCRIPTION OF TEST MODES

To investigate the maximum EMI emission characteristics generates from EUT, the test system was pre-scanning tested base on the consideration of following EUT operation mode or test configuration mode which possible have effect on EMI emission level. Each of these EUT operation mode(s) or test configuration mode(s) mentioned above was evaluated respectively.

Pretest Mode	Description
Mode 1	Working

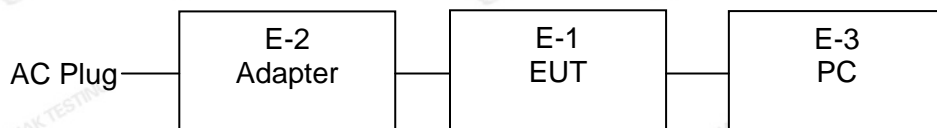
For Conducted Test	
Final Test Mode	Description
Mode 1	Working

For Radiated Test	
Final Test Mode	Description
Mode 1	Working



2.3 DESCRIPTION OF TEST SETUP


Mode 1:





2.4 DESCRIPTION TEST PERIPHERAL AND EUT PERIPHERAL

The EUT has been tested as an independent unit together with other necessary accessories or support units. The following support units or accessories were used to form a representative test configuration during the tests.

Item	Equipment	Trade Mark	Model/Type No.	Series No.	Note
E-1	CM4 AI CAMERA		ED-AIC2000	N/A	EUT
E-2	Adapter	N/A	GST36B24	N/A	
E-3	PC	Lenovo	L480	N/A	

Item	Shielded Type	Ferrite Core	Length	Note

Note:

- (1) The support equipment was authorized by Declaration of Confirmation.
- (2) For detachable type I/O cable should be specified the length in cm in 『Length』 column.
- (3) “YES” is means “shielded” “with core”; “NO” is means “unshielded” “without core”.

**2.5 MEASUREMENT INSTRUMENTS LIST**

Item	Equipment	Manufacturer	Model No.	Serial No.	Last Cal.	Cal. Interval
1.	L.I.S.N.	R&S	ENV216	HKE-002	Feb. 20, 2024	1 Year
2.	L.I.S.N.	R&S	ENV216	HKE-059	May 09, 2024	1 Year
3.	EMI Test Receiver	R&S	ESR	HKE-005	Feb. 20, 2024	1 Year
4.	Spectrum analyzer	Agilent	N9020A	HKE-048	Feb. 20, 2024	1 Year
5.	Spectrum analyzer	R&S	FSV3044	HKE-126	Feb. 20, 2024	1 Year
6.	Preamplifier	EMCI	EMC05184 5S	HKE-006	Feb. 20, 2024	1 Year
7.	Preamplifier	Schwarzbeck	BBV 9743	HKE-016	Feb. 20, 2024	1 Year
8.	Preamplifier	A.H. Systems	SAS-574	HKE-182	Feb. 20, 2024	1 Year
9.	6d Attenuator	Pasternack	6db	HKE-184	May 09, 2024	1 Year
10.	EMI Test Receiver	Rohde & Schwarz	ESR-7	HKE-010	Feb. 20, 2024	1 Year
11.	Broadband Antenna	Schwarzbeck	VULB9168	HKE-167	Feb. 21, 2024	2 Year
12.	Loop Antenna	COM-POWER	AL-130R	HKE-014	Feb. 21, 2024	2 Year
13.	Horn Antenna	Schwarzbeck	9120D	HKE-013	Feb. 21, 2024	2 Year
14.	EMI Test Software	Tonscend	JS32-CE 2.5.0.6	HKE-081	/	/
15.	EMI Test Software	Tonscend	JS32-RE 5.0.0	HKE-082	/	/



3. EMC EMISSION TEST

3.1 CONDUCTED EMISSION MEASUREMENT

3.1.1 POWER LINE CONDUCTED EMISSION (Frequency Range 150KHz-30MHz)

FREQUENCY (MHz)	Class A (dBuV)		Class B (dBuV)	
	Quasi-peak	Average	Quasi-peak	Average
0.15 -0.5	79.00	66.00	66 - 56 *	56 - 46 *
0.50 -5.0	73.00	60.00	56.00	46.00
5.0 -30.0	73.00	60.00	60.00	50.00

Note:

- (1) The tighter limit applies at the band edges.
- (2) The limit of " * " marked band means the limitation decreases linearly with the logarithm of the frequency in the range.

The following table is the setting of the receiver

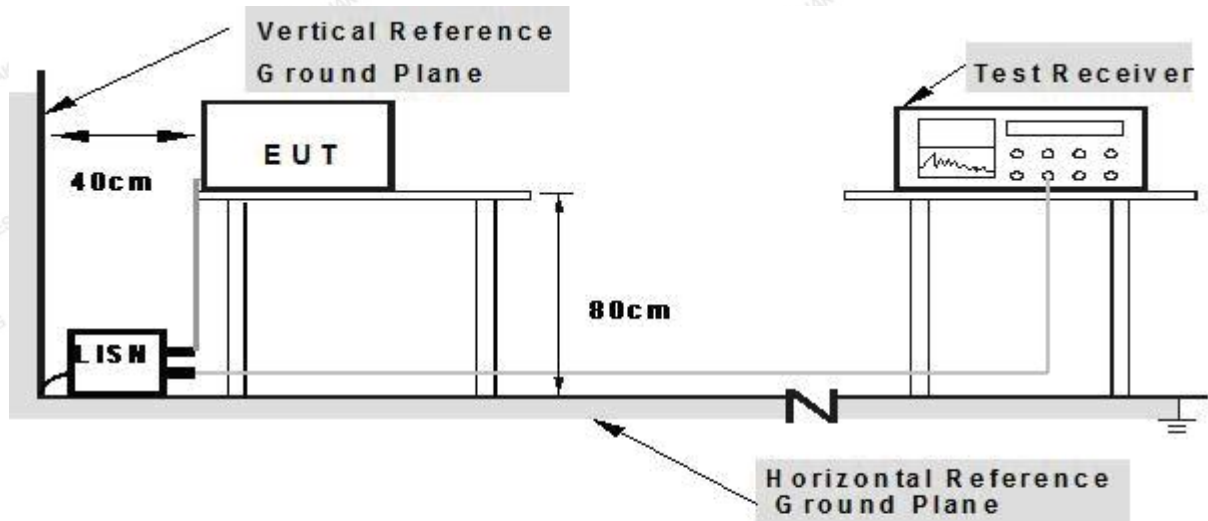
Receiver Parameters	Setting
Attenuation	10 dB
Start Frequency	0.15 MHz
Stop Frequency	30 MHz
IF Bandwidth	9 kHz



3.1.2 TEST PROCEDURE

- The EUT was placed 0.4 meters from the horizontal ground plane with EUT being connected to the power mains through a line impedance stabilization network (LISN). All other support equipments powered from additional LISN(s). The LISN provide 50 Ohm/ 50uH of coupling impedance for the measuring instrument.
- Interconnecting cables that hang closer than 40 cm to the ground plane shall be folded back and forth in the center forming a bundle 30 to 40 cm long.
- I/O cables that are not connected to a peripheral shall be bundled in the center. The end of the cable may be terminated, if required, using the correct terminating impedance. The overall length shall not exceed 1 m.
- LISN at least 80 cm from nearest part of EUT chassis.
- For the actual test configuration, please refer to the related Item –EUT Test Photos.

3.1.3 TEST SETUP



Note: 1.Support units were connected to second LISN.

2.Both of LISNs (AMN) are 80 cm from EUT and at least 80 from other units and other metal planes

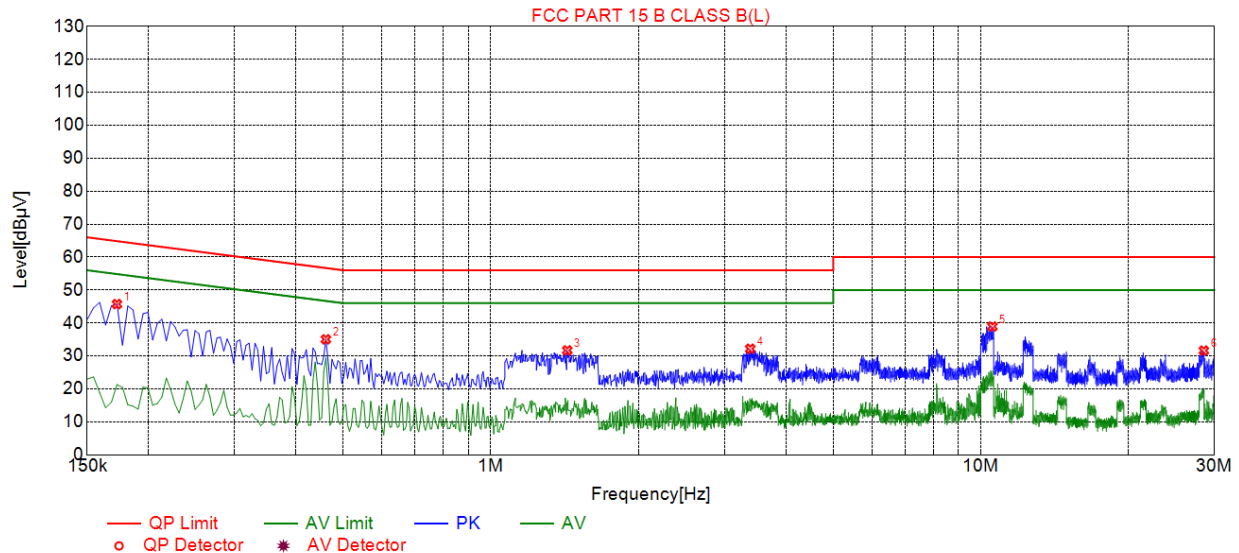
3.1.4 EUT OPERATING CONDITIONS

The EUT tested system was configured as the statements of 2.3 Unless otherwise a special operating condition is specified in the follows during the testing.



3.1.5 TEST RESULTS

EUT :	CM4 AI CAMERA	Model Name :	ED-AIC2000
Temperature :	24 °C	Relative Humidity :	54%
Pressure :	1010hPa	Test Date :	2025-01-09
Test Mode :	Mode 1	Phase :	L
Test Voltage :	DC24V From Adapter		



Suspected List								
NO.	Freq. [MHz]	Level [dBμV]	Factor [dB]	Limit [dBμV]	Margin [dB]	Reading [dBμV]	Detector	Type
1	0.1725	45.74	19.84	64.84	19.10	25.90	PK	L
2	0.4605	35.04	19.84	56.68	21.64	15.20	PK	L
3	1.4325	31.68	19.92	56.00	24.32	11.76	PK	L
4	3.3855	32.17	20.08	56.00	23.83	12.09	PK	L
5	10.5675	38.92	19.93	60.00	21.08	18.99	PK	L
6	28.5450	31.62	20.23	60.00	28.38	11.39	PK	L

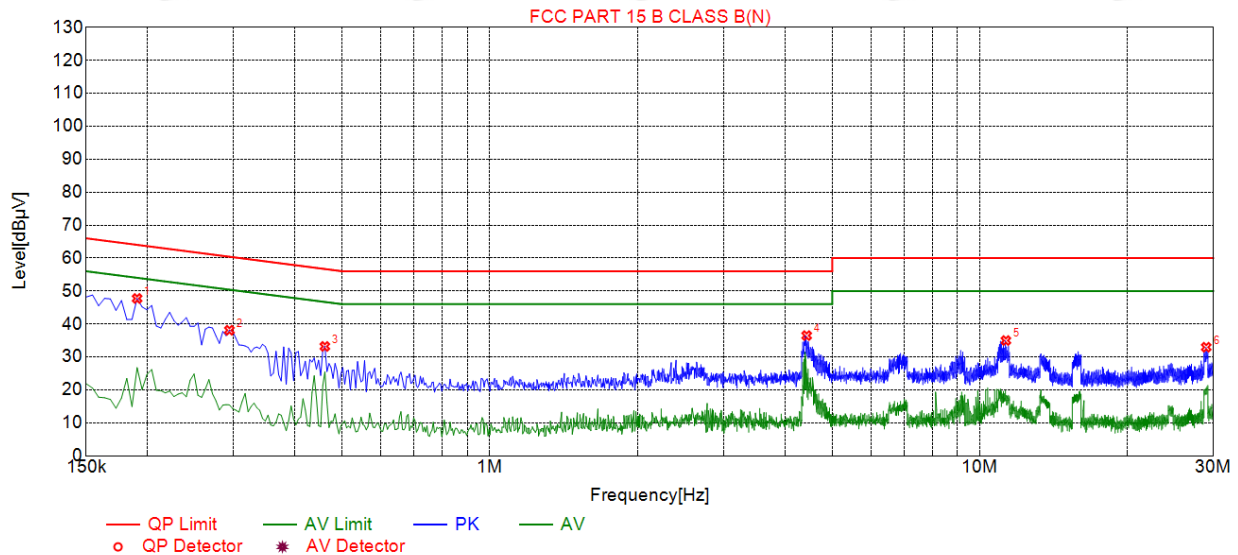
Remark: $\text{Margin} = \text{Limit} - \text{Level}$

$\text{Correction factor} = \text{Cable lose} + \text{ISN insertion loss}$

$\text{Level} = \text{Test receiver reading} + \text{correction factor}$



EUT :	CM4 AI CAMERA	Model Name :	ED-AIC2000
Temperature :	24 °C	Relative Humidity :	54%
Pressure :	1010hPa	Test Date :	2025-01-09
Test Mode :	Mode 1	Phase :	N
Test Voltage :	DC24V From Adapter		



Suspected List								
NO.	Freq. [MHz]	Level [dBμV]	Factor [dB]	Limit [dBμV]	Margin [dB]	Reading [dBμV]	Detector	Type
1	0.1905	47.74	19.74	64.01	16.27	28.00	PK	N
2	0.2940	38.10	19.73	60.41	22.31	18.37	PK	N
3	0.4605	33.19	19.73	56.68	23.49	13.46	PK	N
4	4.4340	36.48	19.98	56.00	19.52	16.50	PK	N
5	11.3100	34.98	19.82	60.00	25.02	15.16	PK	N
6	29.0040	32.95	20.35	60.00	27.05	12.60	PK	N

Remark: $\text{Margin} = \text{Limit} - \text{Level}$

$\text{Correction factor} = \text{Cable lose} + \text{ISN insertion loss}$

$\text{Level} = \text{Test receiver reading} + \text{correction factor}$



3.2 RADIATED EMISSION MEASUREMENT

3.2.1 LIMITS OF RADIATED EMISSION MEASUREMENT

FREQUENCY (MHz)	Class A (at 10m)	Class B (at 3m)
	dBuV/m	dBuV/m
30 ~ 88	39.0	40.0
88 ~ 216	43.5	43.5
216 ~ 960	46.5	46.0
Above 960	49.5	54.0

Notes:

- (1) The limit for radiated test was performed according to as following:
FCC PART 15B /ICES-003.
- (2) The tighter limit applies at the band edges.
- (3) Emission level (dBuV/m)=20log Emission level (uV/m).

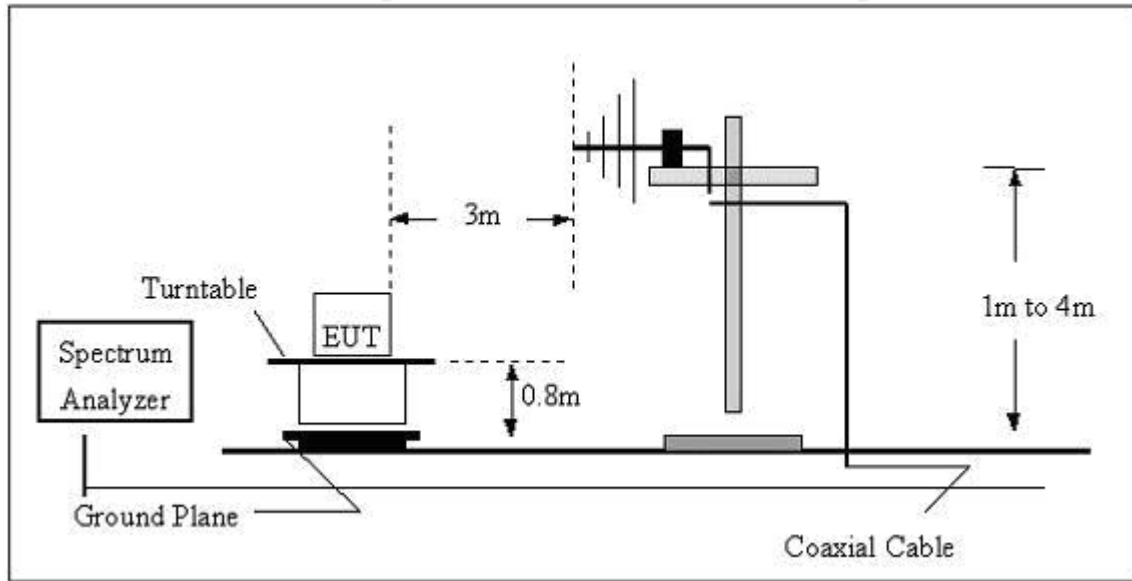
3.2.2 TEST PROCEDURE

- a. The measuring distance of at 3 m shall be used for measurements at frequency up to 1GHz. For frequencies above 1GHz, any suitable measuring distance may be used.
- b. The EUT was placed on the top of a rotating table 0.8 meters above the ground at a 3 meter open area test site. The table was rotated 360 degrees to determine the position of the highest radiation.
- c. The height of the equipment or of the substitution antenna shall be 0.8 m; the height of the test antenna shall vary between 1 m to 4 m. Both horizontal and vertical polarizations of the antenna are set to make the measurement.
- d. The initial step in collecting conducted emission data is a spectrum analyzer peak detector mode pre-scanning the measurement frequency range. Significant peaks are then marked and then Quasi Peak detector mode re-measured, above 1G Average detector mode will be instead.
- e. If the Peak Mode measured value compliance with and lower than Quasi Peak Mode Limit, the EUT shall be deemed to meet QP(AV) Limits and then no additional QP Mode measurement performed.
- f. For the actual test configuration, please refer to the related Item –EUT Test Photos.

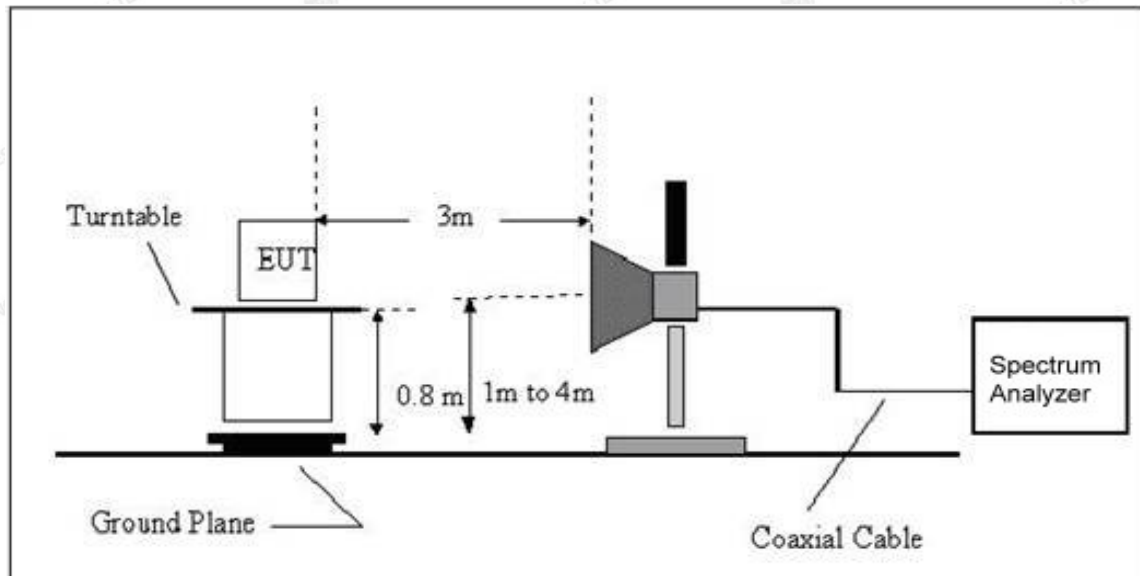


3.2.3 TEST SETUP

(A) Radiated Emission Test Set-Up Frequency Below 1 GHz



(B) Radiated Emission Test Set-Up Frequency Above 1GHz



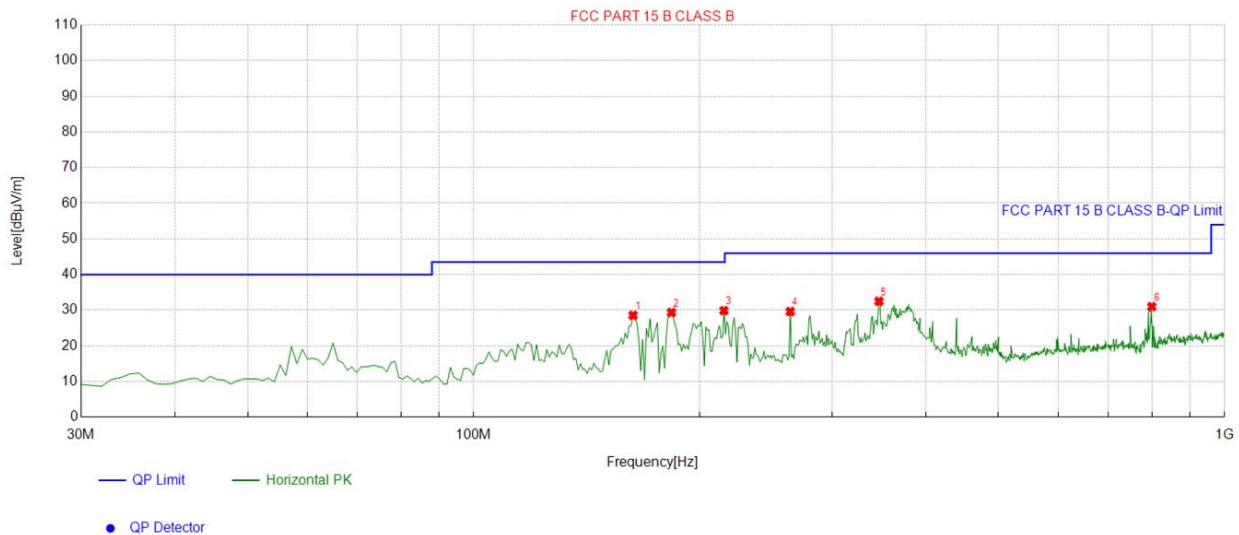
3.2.4 EUT OPERATING CONDITIONS

The EUT tested system was configured as the statements of **2.3** Unless otherwise a special operating condition is specified in the follows during the testing.



3.2.5 TEST RESULTS

EUT :	CM4 AI CAMERA	Model Name :	ED-AIC2000
Temperature :	24 °C	Relative Humidity :	54%
Pressure :	1010 hPa	Test Date :	2025-01-09
Test Mode :	Mode 1	Polarization :	Horizontal
Test Power :	DC24V From Adapter		



Suspected List

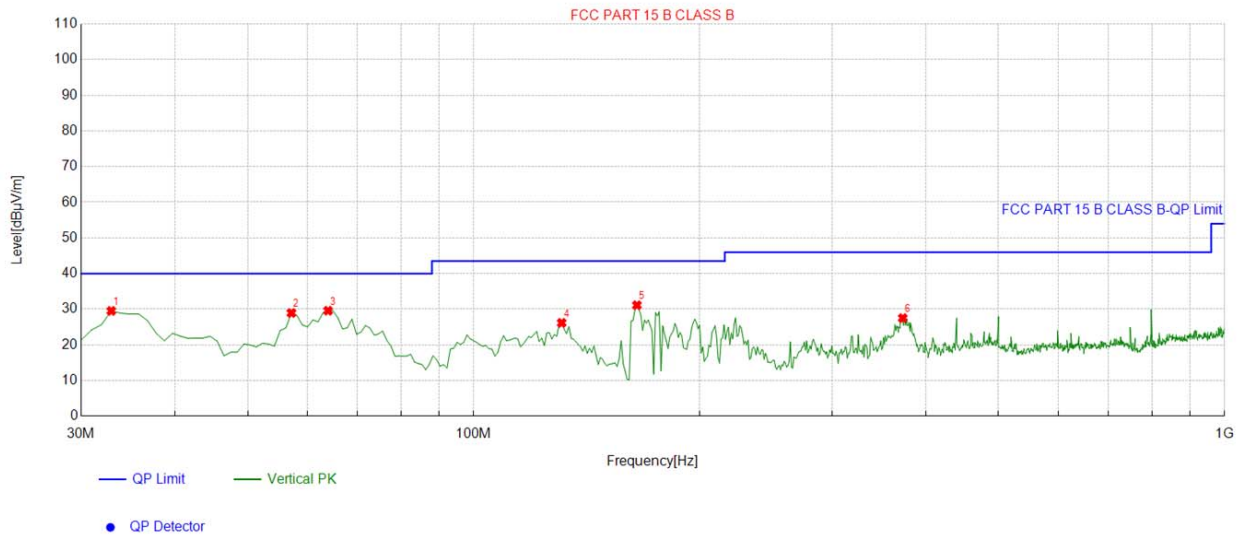
NO.	Freq. [MHz]	Factor [dB]	Reading [dBμV/m]	Level [dBμV/m]	Limit [dBμV/m]	Margin [dB]	Height [cm]	Angle [°]	Polarity
1	163.02302	-17.59	46.16	28.57	43.50	14.93	100	322	Horizontal
2	183.41341	-15.63	45.01	29.38	43.50	14.12	100	210	Horizontal
3	215.45545	-14.72	44.62	29.90	43.50	13.60	100	170	Horizontal
4	264.00400	-13.15	42.78	29.63	46.00	16.37	100	177	Horizontal
5	346.53653	-10.10	42.60	32.50	46.00	13.50	100	249	Horizontal
6	799.97998	-3.01	34.00	30.99	46.00	15.01	100	296	Horizontal

Final Data List

Remark: Factor = Cable loss + Antenna factor – Preamplifier; Level = Reading + Factor; Margin = Limit – Level;



EUT :	CM4 AI CAMERA	Model Name :	ED-AIC2000
Temperature :	24 °C	Relative Humidity :	54%
Pressure :	1010 hPa	Test Date :	2025-01-09
Test Mode :	Mode 1	Polarization :	Vertical
Test Power :	DC24V From Adapter		

**Suspected List**

NO.	Freq. [MHz]	Factor [dB]	Reading [dBμV/m]	Level [dBμV/m]	Limit [dBμV/m]	Margin [dB]	Height [cm]	Angle [°]	Polarity
1	32.912913	-15.12	44.64	29.52	40.00	10.48	100	271	Vertical
2	57.187187	-13.76	42.70	28.94	40.00	11.06	100	95	Vertical
3	63.983984	-14.38	43.96	29.58	40.00	10.42	100	232	Vertical
4	130.98098	-17.44	43.61	26.17	43.50	17.33	100	102	Vertical
5	164.96496	-17.49	48.62	31.13	43.50	12.37	100	340	Vertical
6	372.75275	-9.90	37.42	27.52	46.00	18.48	100	354	Vertical

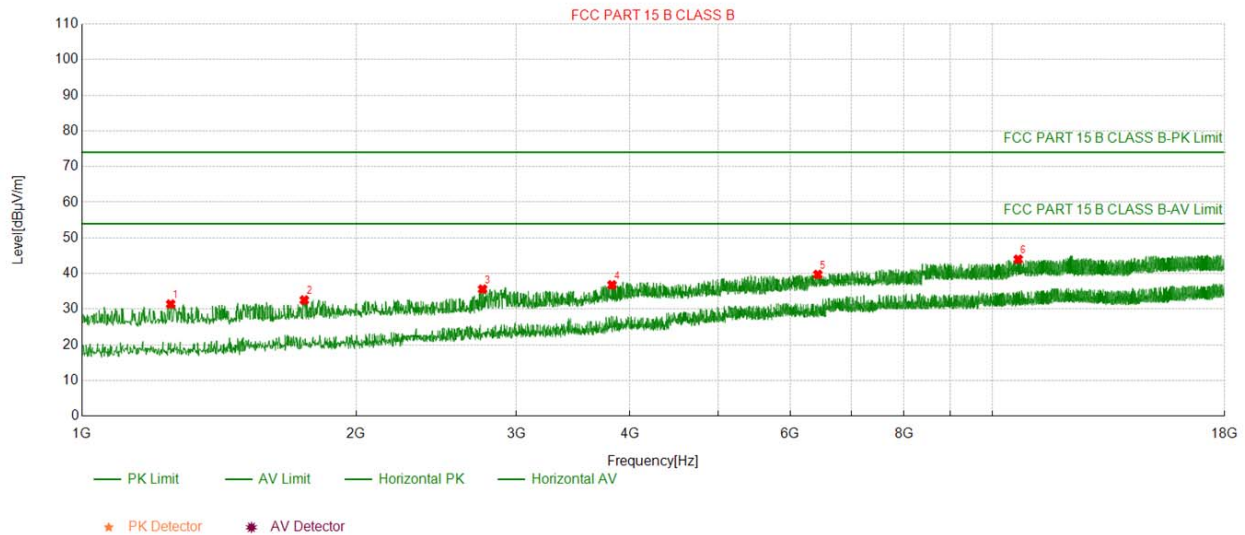
Final Data List

Remark: Factor = Cable loss + Antenna factor – Preamplifier; Level = Reading + Factor; Margin = Limit – Level;



3.2.6 TEST RESULTS(Above 1GHz)

EUT :	CM4 AI CAMERA	Model Name :	ED-AIC2000
Temperature :	24 °C	Relative Humidity :	54%
Pressure :	1010 hPa	Test Date :	2025-01-09
Test Mode :	Mode 1	Polarization :	Horizontal
Test Power :	DC24V From Adapter		



Suspected List

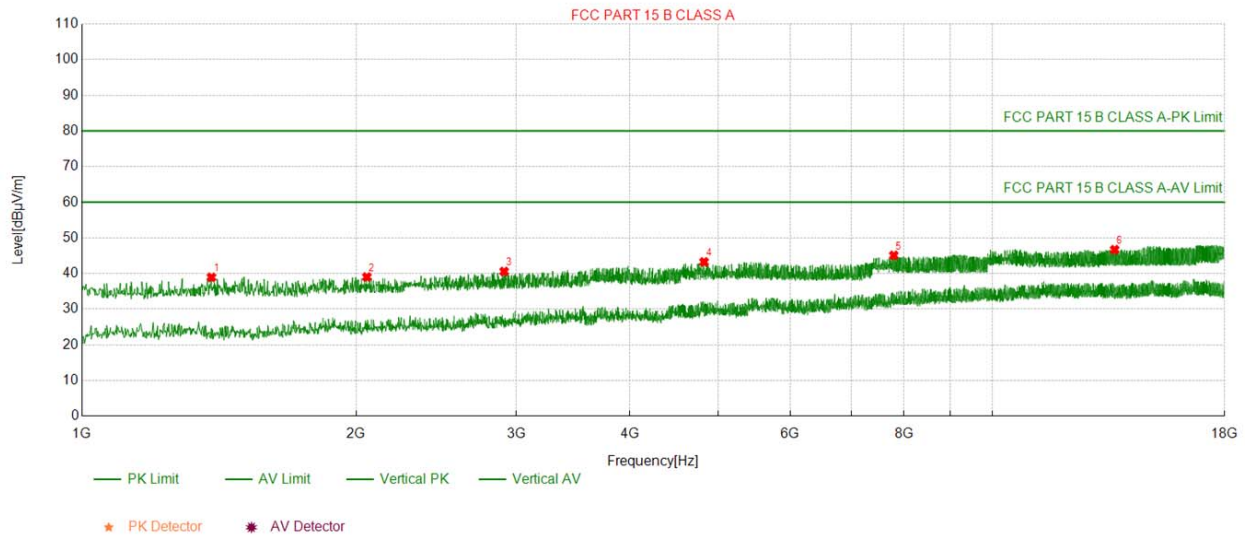
NO.	Freq. [MHz]	Factor [dB]	Reading [dBμV/m]	Level [dBμV/m]	Limit [dBμV/m]	Margin [dB]	Height [cm]	Angle [°]	Polarity
1	1251.6251	-21.26	52.69	31.43	74.00	42.57	100	350	Horizontal
2	1754.8754	-20.13	52.69	32.56	74.00	41.44	100	170	Horizontal
3	2754.5754	-15.93	51.54	35.61	74.00	38.39	100	220	Horizontal
4	3822.2822	-12.78	49.60	36.82	74.00	37.18	100	160	Horizontal
5	6432.0432	-7.09	46.82	39.73	74.00	34.27	100	290	Horizontal
6	10677.367	0.45	43.55	44.00	74.00	30.00	100	170	Horizontal

Final Data List

Remark: Factor = Cable loss + Antenna factor – Preamplifier; Level = Reading + Factor; Margin = Limit – Level;



EUT :	CM4 AI CAMERA	Model Name :	ED-AIC2000
Temperature :	24 °C	Relative Humidity :	54%
Pressure :	1010 hPa	Test Date :	2025-01-09
Test Mode :	Mode 1	Polarization :	Vertical
Test Power :	DC24V From Adapter		



Suspected List									
NO.	Freq. [MHz]	Factor [dB]	Reading [dBμV/m]	Level [dBμV/m]	Limit [dBμV/m]	Margin [dB]	Height [cm]	Angle [°]	Polarity
1	1387.6387	-20.54	59.48	38.94	80.00	41.06	100	70	Vertical
2	2055.8055	-18.61	57.64	39.03	80.00	40.97	100	180	Vertical
3	2909.2909	-15.34	55.92	40.58	80.00	39.42	100	40	Vertical
4	4823.6823	-9.68	52.93	43.25	80.00	36.75	100	250	Vertical
5	7795.5795	-3.69	48.78	45.09	80.00	34.91	100	90	Vertical
6	13628.862	4.48	42.21	46.69	80.00	33.31	100	0	Vertical

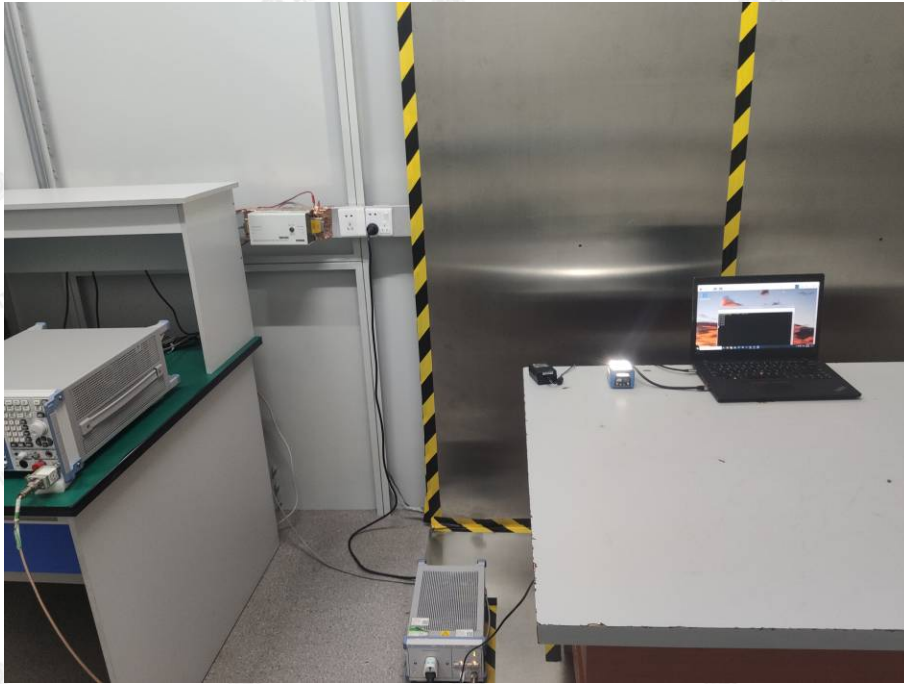
Final Data List

Remark: Factor = Cable loss + Antenna factor – Preamplifier; Level = Reading + Factor; Margin = Limit – Level;

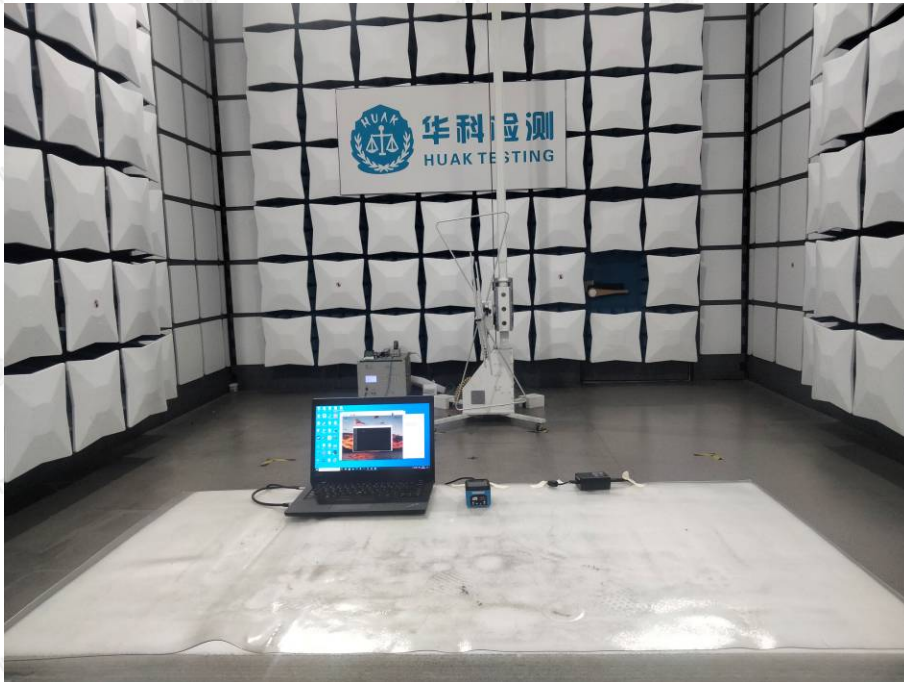


4. EUT TEST PHOTO

Conducted Emission



Radiated Emission





ATTACHMENT PHOTOGRAPHS OF EUT

Photo 1



Photo 2





Photo 3

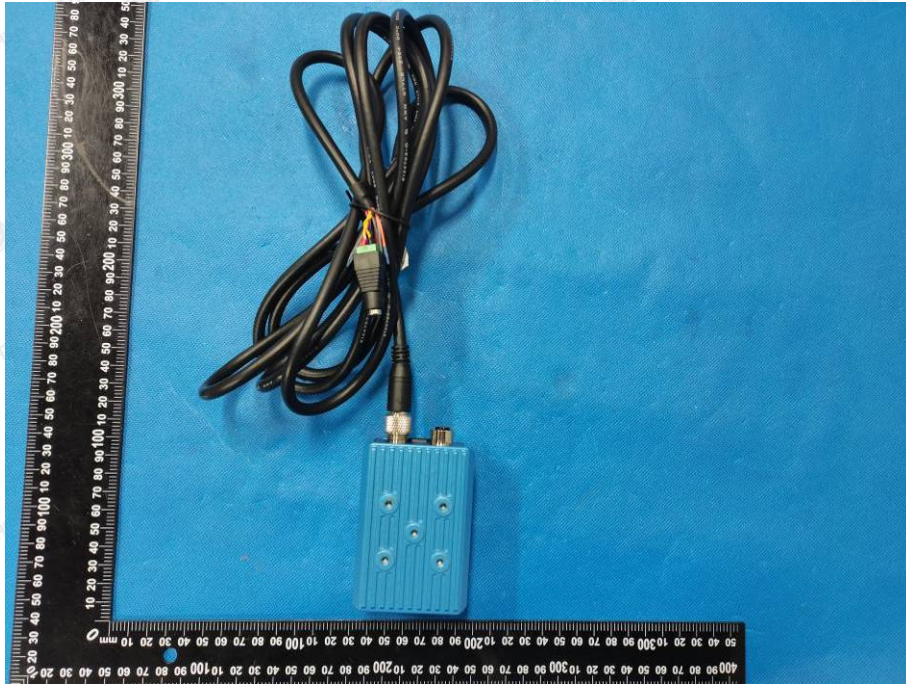


Photo 4





Photo 5



Photo 6





Photo 7



Photo 8

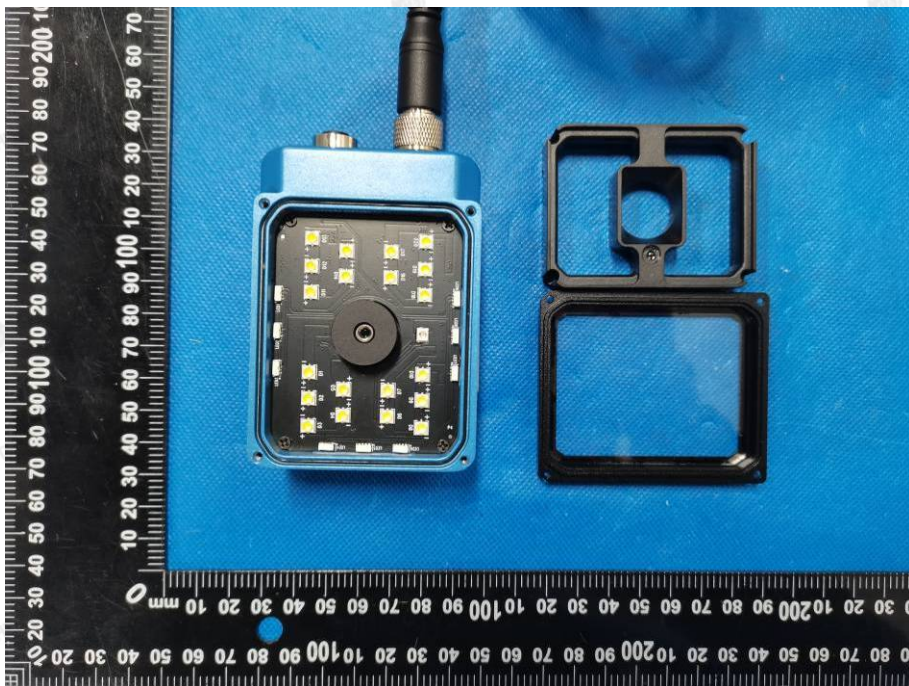




Photo 9

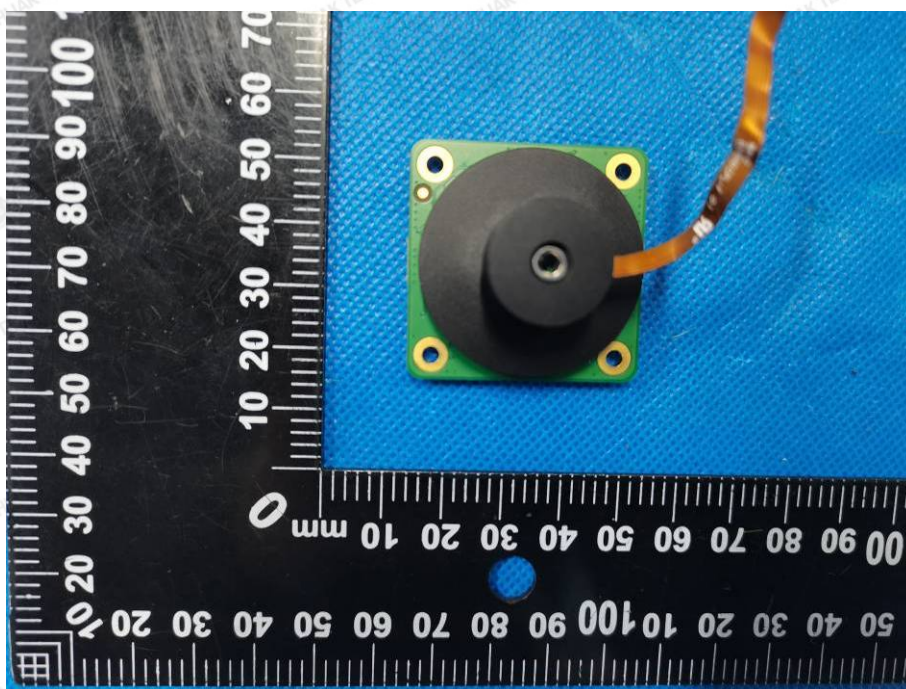


Photo 10





Photo 11

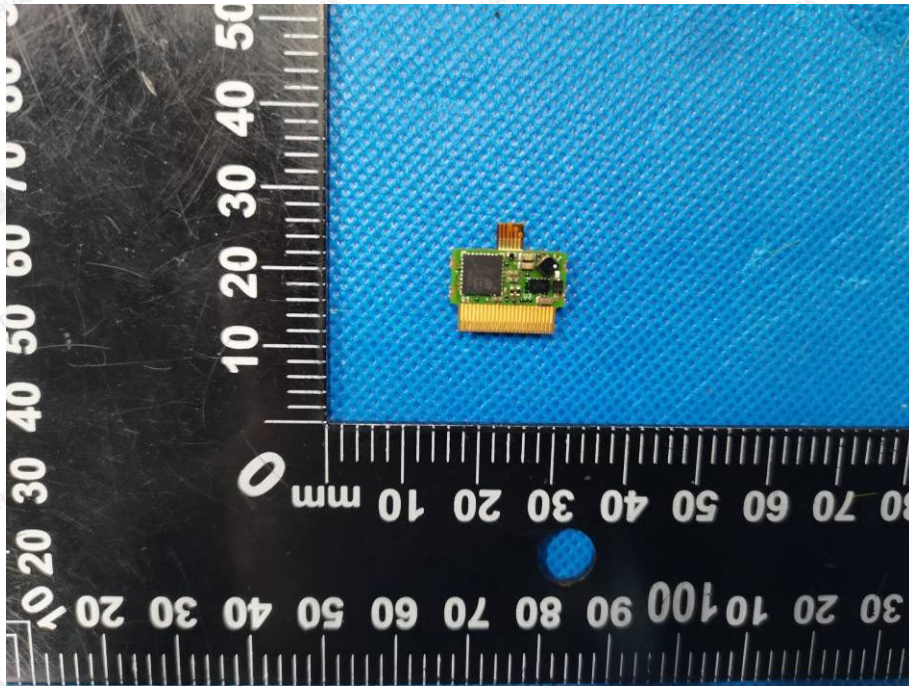


Photo 12

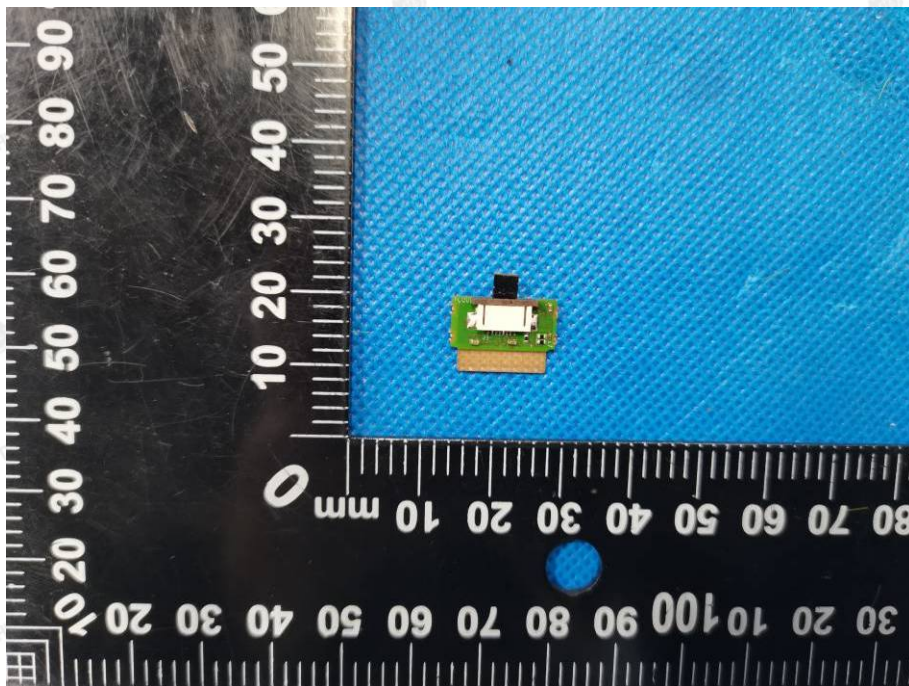




Photo 13

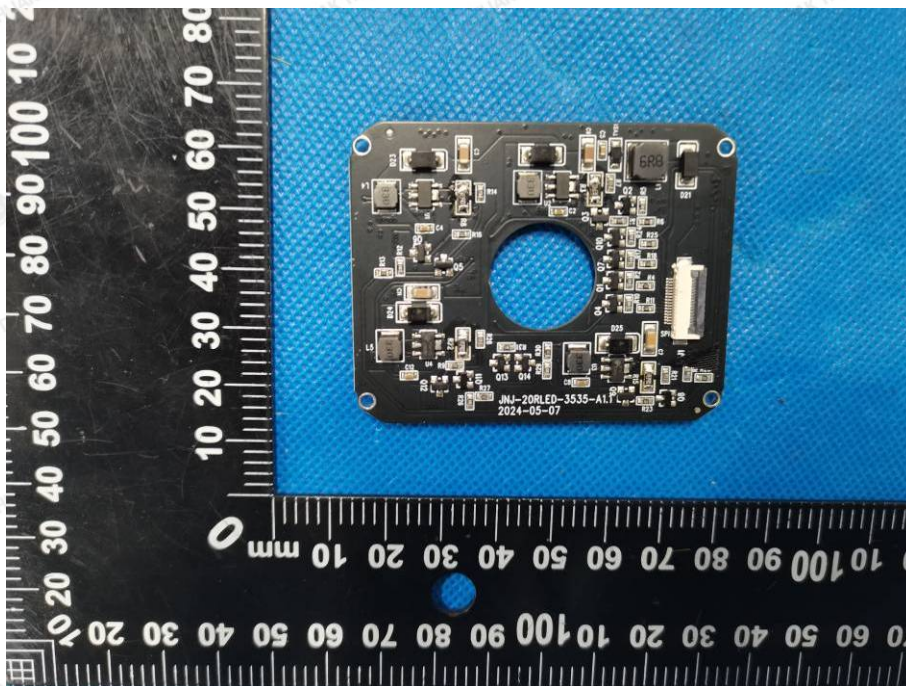


Photo 14

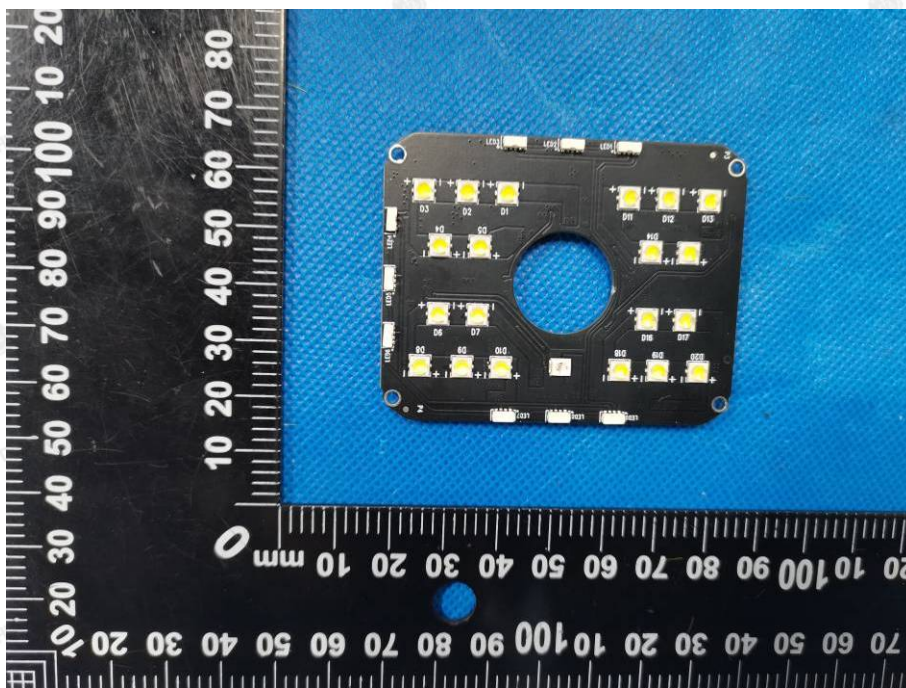




Photo 15

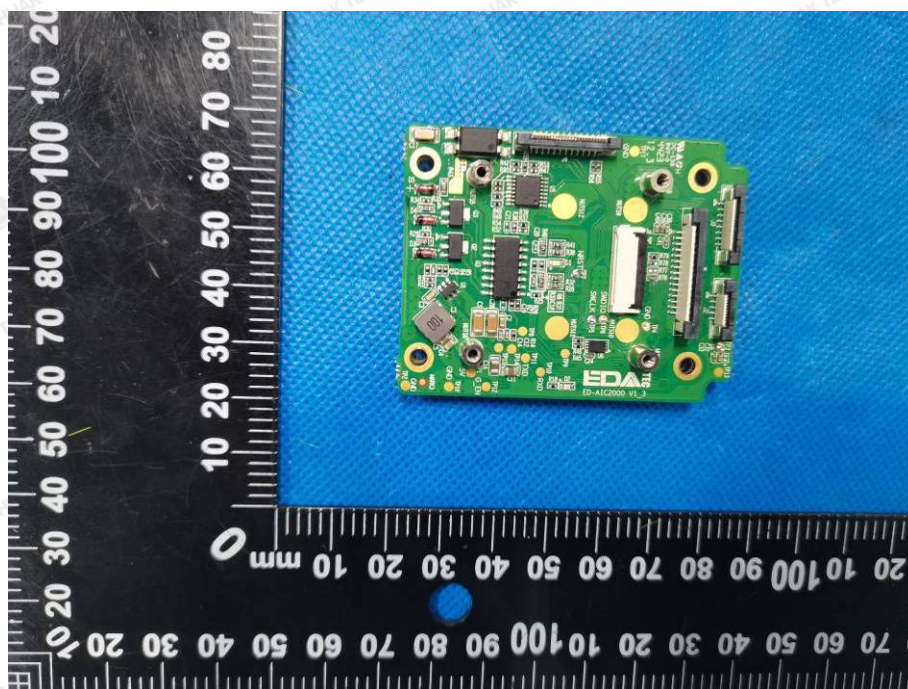


Photo 16

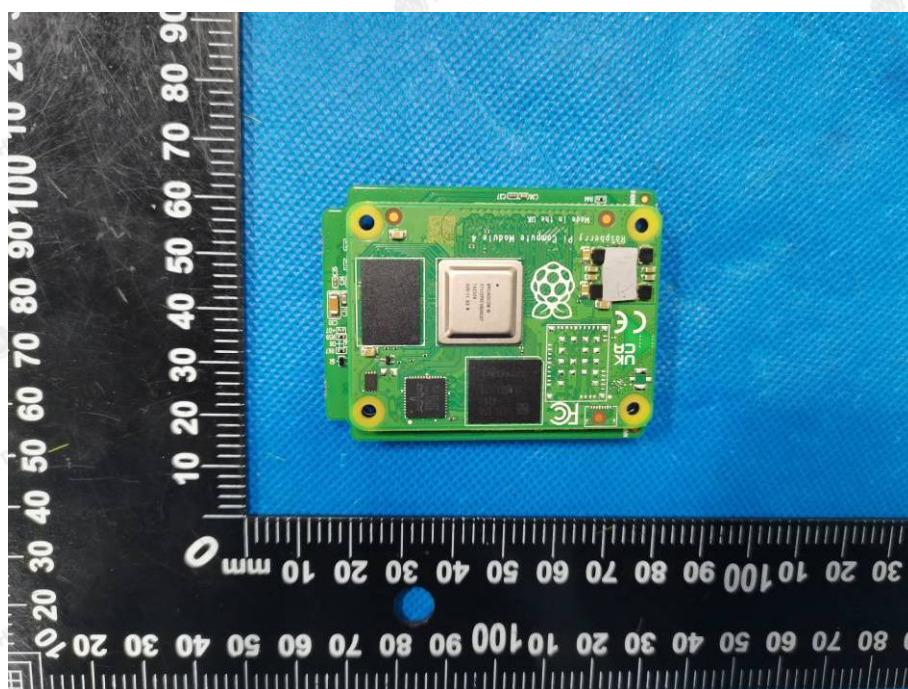




Photo 17

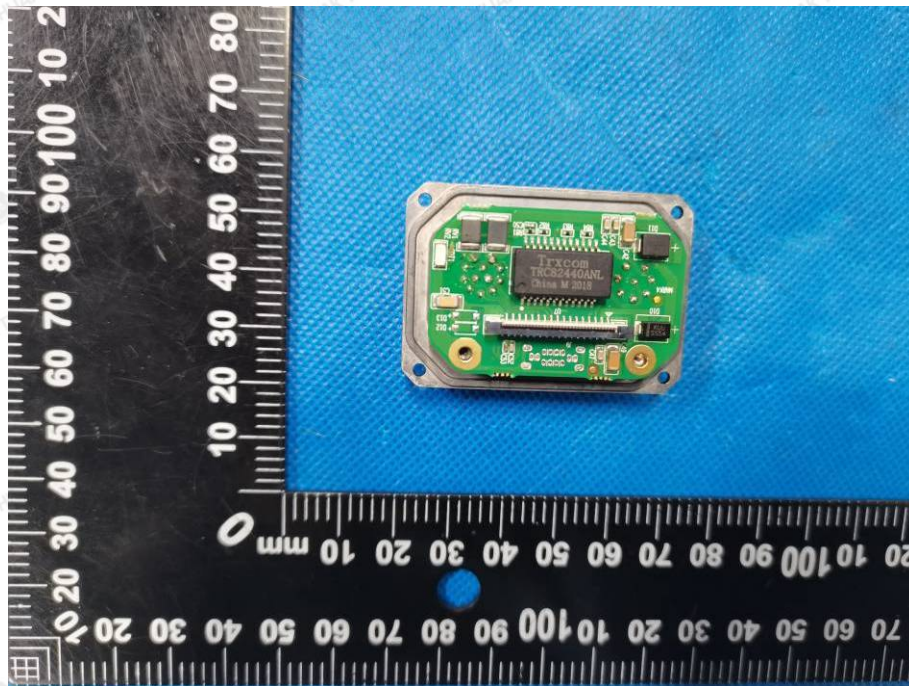
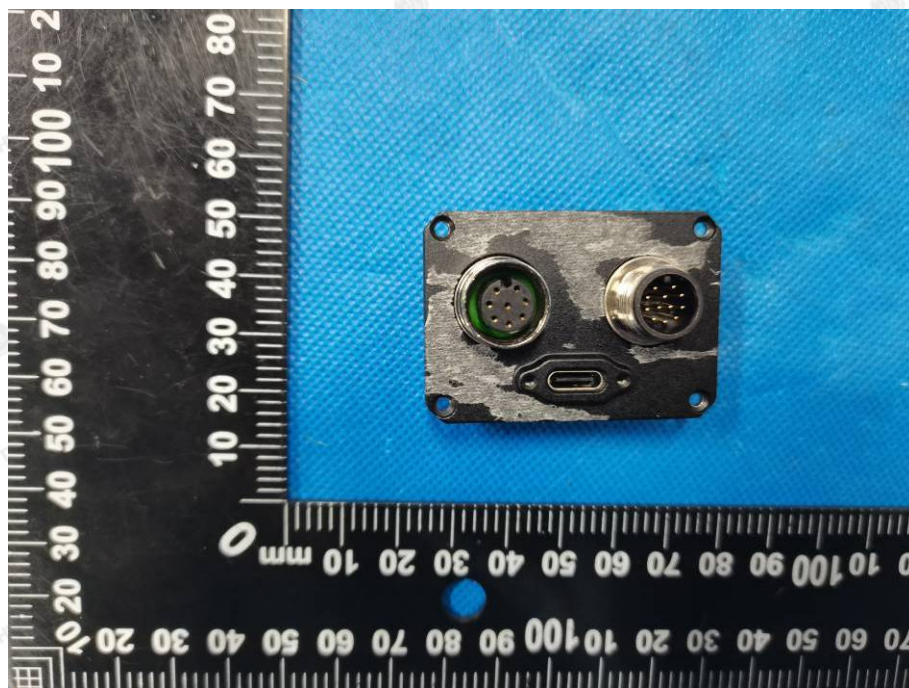


Photo 18



-----End of report-----